

## VIEWING RECORDED VIDEO AND IMAGES

To view recorded video or images, power down the camera by holding the red button until “Release to turn off” is displayed on the camera’s display. The camera will shut down upon release of the red button. Then, remove the camera battery and locate the USB connector located inside the battery compartment. Shown in Figure A.

Using the supplied USB, plug the small USB connector into the connector located in the battery compartment. See Figure B. Plug the opposite end of the USB cable into an available USB port on a computer. See Figure C.



Figure A

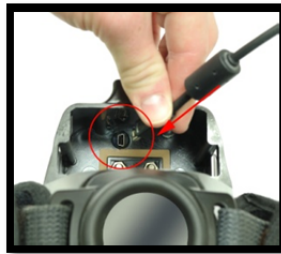


Figure B



Figure C

The computer will recognize the device and display a message reading “New Hardware Found”. Shown in Figure D.

The computer will automatically install the required drivers to operate the Video Capture Plus. Once the drivers have installed, a message will appear stating, “Your Device is now ready to use”.



Figure D

Depending on the configuration of the computer, you may need to locate the drive by accessing “My Computer” and clicking on the Removable Disk drive. To view recorded video or captured images, click on “View Files Icon” and the contents of the Video Capture Plus device will be displayed. Shown in Figure E. Initial setup may be required in order to view recorded video or captured images. Video Capture Plus is compatible with the following Microsoft Windows Operating systems:

Windows 2000                      Windows Vista  
Windows XP                        Window 7

For Windows 7, no codec is required. For earlier versions of Windows, the codec should be installed automatically by the software provided on

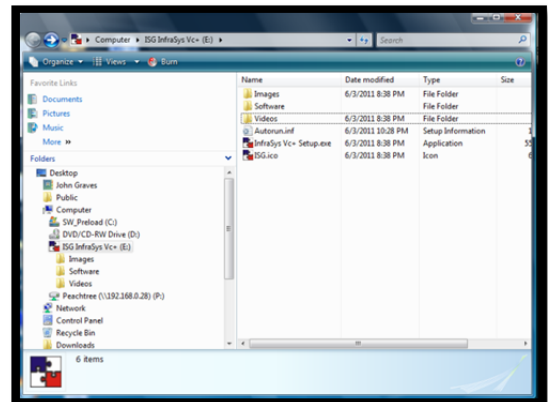


Figure E

the drive that appears when the USB is connected (if the codec is not already present). The user must click on the ISG Infrasy SETUP option provided on the drive to start the process. The setup process will automatically begin running.

*Note: Administrative rights may be required to install programs on some computers. If you receive an error due to account privileges, please contact your network administrator.*

Once you select Infrasy VC+ Setup.exe, follow the install wizard will guide you through the install process. Shown in Figure F.

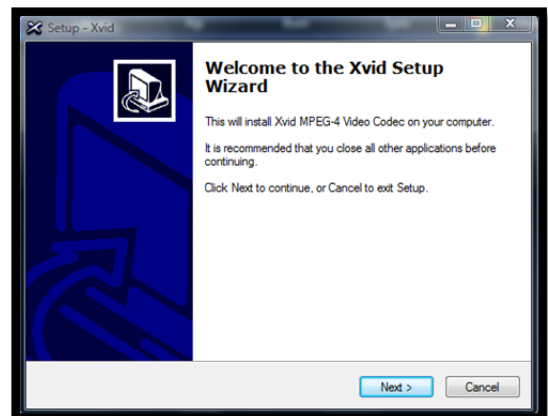


Figure F

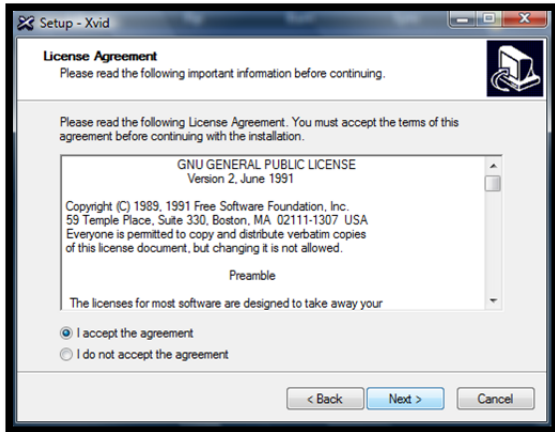


Figure F1

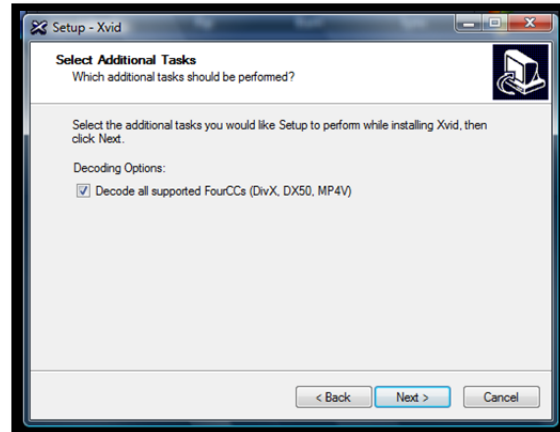


Figure F5

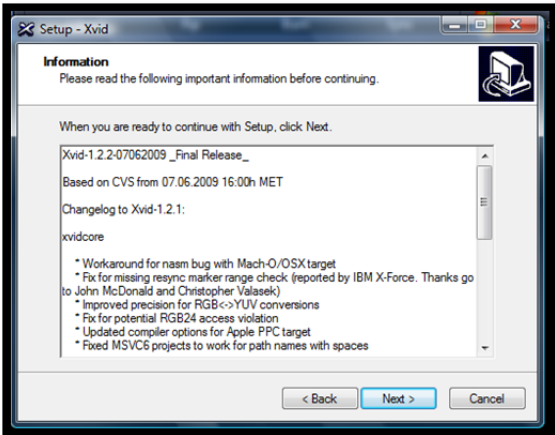


Figure F2

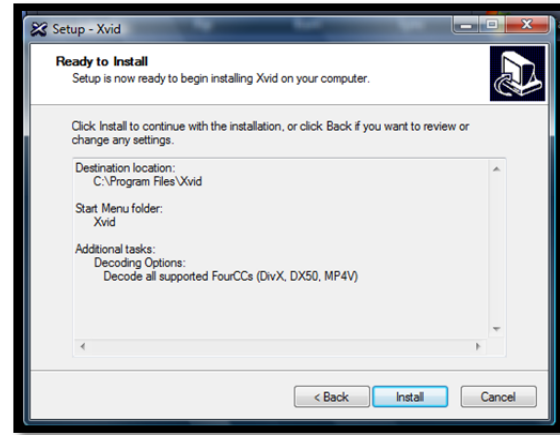


Figure F6

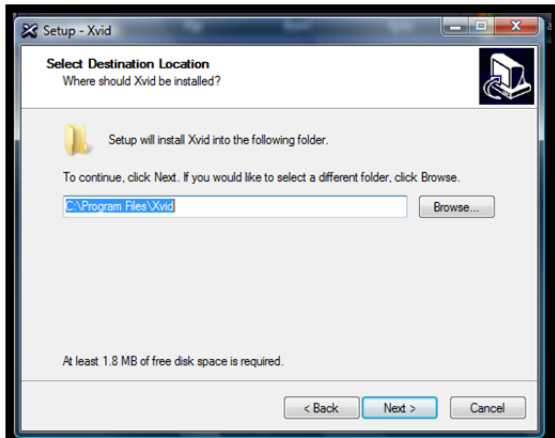


Figure F3

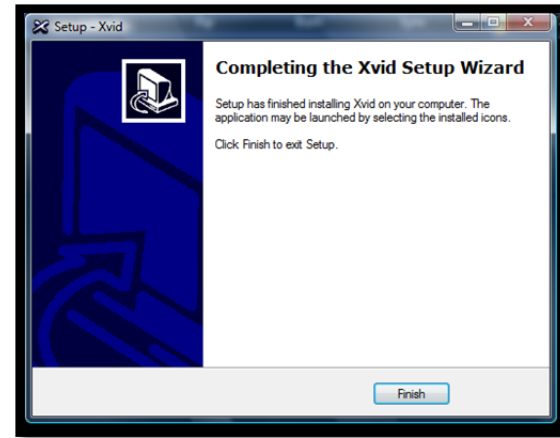


Figure F7

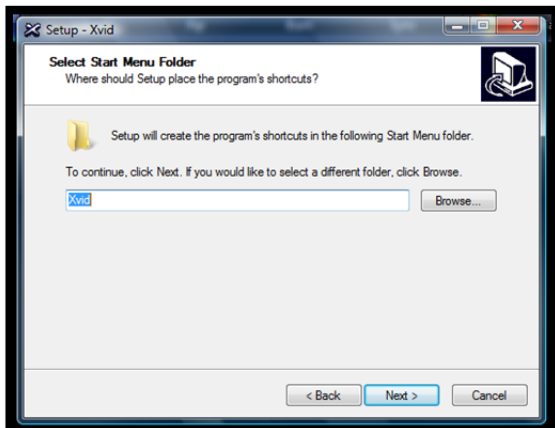


Figure F4



www.isgfire.com

877-733-3473